

# PENNDOT e-Notification

Bureau of Design  
Engineering Computing Management Division



## BRADD

No. 012

June 1, 2006

## Problem Pile List not Matching Publication 7

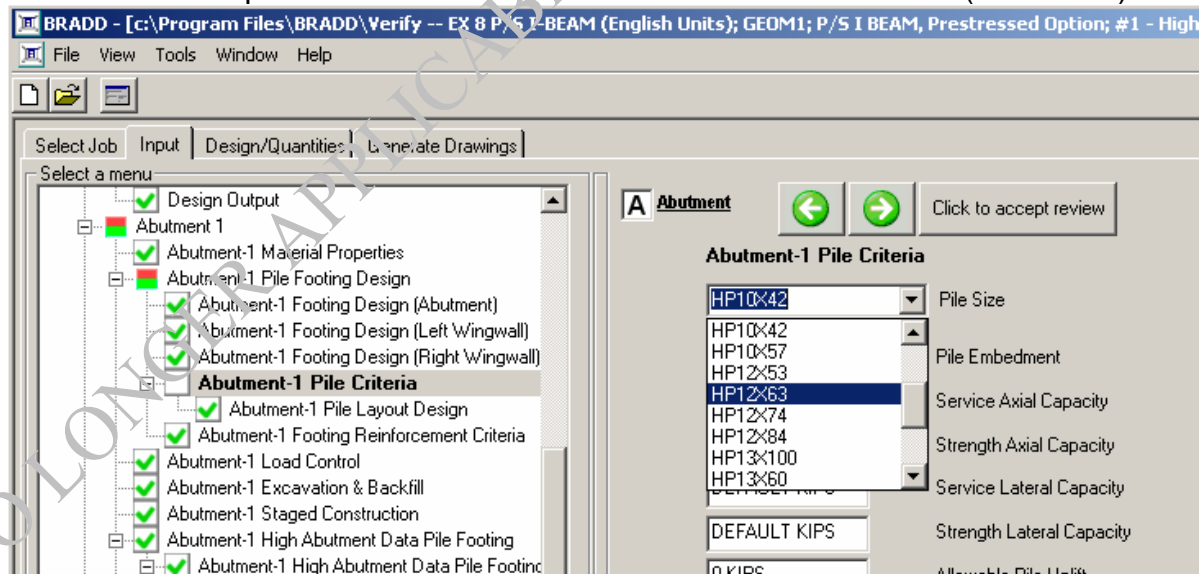
### Problem Statement:

The HP pile list in the pull-down list for the 'Pile Size' input in BRADD does not match the available piles given in Publication 7 (Construction Items Catalog).

The following are the piles listed in Publication 7 (Construction Items Catalog) and therefore should be the ones available in BRADD:

|           |                                    |
|-----------|------------------------------------|
| 1005-1100 | STEEL BEAM BEARING PILES, HP8X36   |
| 1005-1101 | STEEL BEAM BEARING PILES, HP10X42  |
| 1005-1102 | STEEL BEAM BEARING PILES, HP10X57  |
| 1005-1103 | STEEL BEAM BEARING PILES, HP12X53  |
| 1005-1104 | STEEL BEAM BEARING PILES, HP12X74  |
| 1005-1105 | STEEL BEAM BEARING PILES, HP14X74  |
| 1005-1106 | STEEL BEAM BEARING PILES, HP14X89  |
| 1005-1107 | STEEL BEAM BEARING PILES, HP14X102 |
| 1005-1108 | STEEL BEAM BEARING PILES, HP14X117 |
| 1005-1109 | STEEL BEAM BEARING PILES, HP12X63  |

The 'Pile Size' input is located on the 'Abutment Pile Criteria' menu (see below).



Archived copies of all previously distributed e-Notifications can be obtained from the PENNDOT BRADD website at <http://bradd.engrprograms.com> and clicking on "e-Notification" and then "Mailing List Archives."

---

**BRADD**

No. 012

June 1, 2006

**Problem Pile List not Matching Publication 7**

---

Currently, the HP piles available through the BRADD input system are as follows:

HP10X42  
HP10X57  
HP12X53  
HP12X63  
HP12X74  
HP12X84  
HP13X60  
HP13X73  
HP13X87  
HP13X100  
HP14X73  
HP14X89  
HP14X102  
HP14X117

Permissible as per the Construction Items Catalog, but produces an error in BRADD

Not permissible as per the Construction Items Catalog.

Because of an erroneous input listing (see above) not all piles that are provided as input options in BRADD will produce a successful pile design. While the HP12X63 is a valid pile as per Publication 7 (Construction Items Catalog), it is not handled properly in BRADD and will produce a cryptic error when the BRADD 'Compute Abutment' module is run. The other HP piles are not available in Publication 7 (Construction Items Catalog) and will therefore not run successfully in BRADD.

**Problem Workaround:**

Currently, the only workaround is to select one of the following HP Piles when using BRADD:

HP10X42  
HP10X57  
HP12X53  
HP12X74  
HP14X73  
HP14X89  
HP14X102  
HP14X117

---

Archived copies of all previously distributed e-Notifications can be obtained from the PENNDOT BRADD website at <http://bradd.engrprograms.com> and clicking on "e-Notification" and then "Mailing List Archives."

---

**BRADD**

No. 012

June 1, 2006

**Problem File List not Matching Publication 7**

---

**Problem Resolution:**

This issue will be addressed in the next release of BRADD. The fix will be to allow only the HP piles shown in Publication 7 & 7M (Construction Items Catalog).

Please direct any questions to:

**Jay M. Fitzgerald, P.E.*****BRADD Manager****Engineering Computing Management Division**Bureau of Design**Pennsylvania DOT**Harrisburg, PA***Phone: (717)787-7057 | Fax: (717)783-8217****E-mail: [jafitzgera@state.pa.us](mailto:jafitzgera@state.pa.us)**

---

Archived copies of all previously distributed e-Notifications can be obtained from the PENNDOT BRADD website at <http://bradd.engrprograms.com> and clicking on "e-Notification" and then "Mailing List Archives."